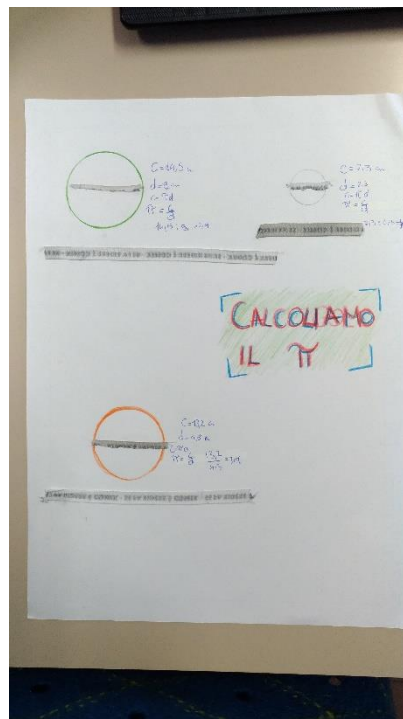
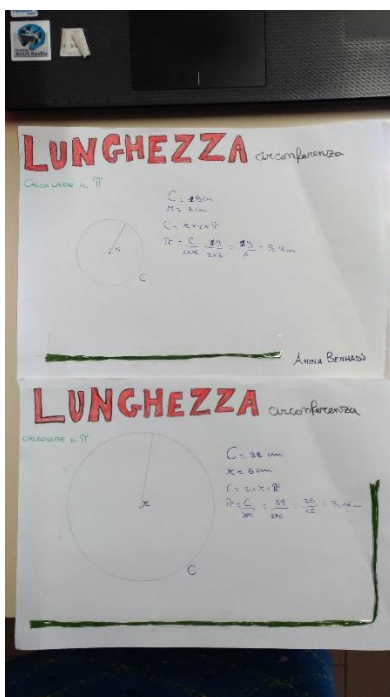
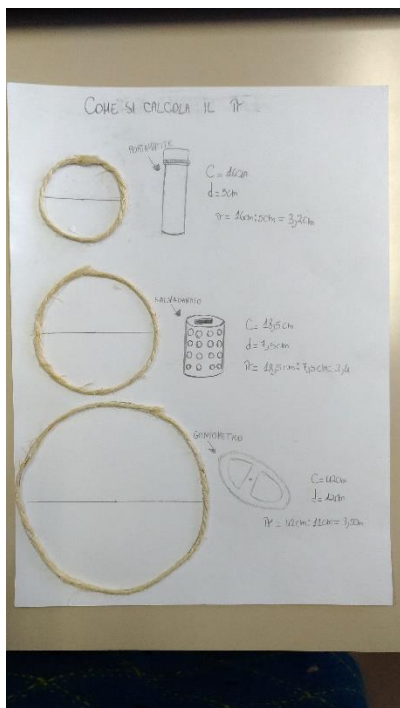
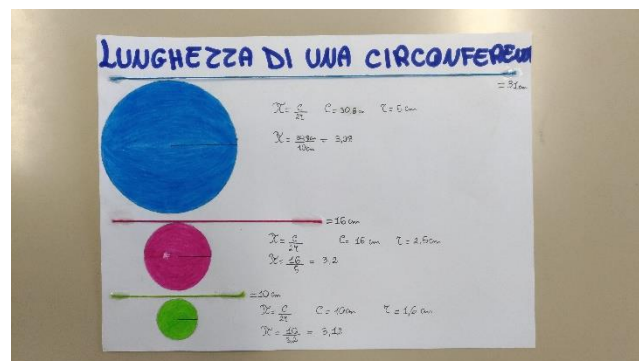
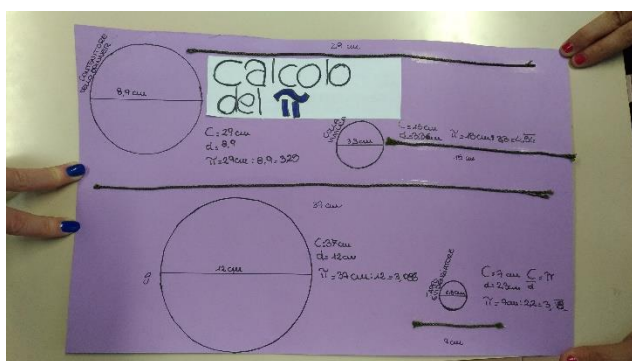
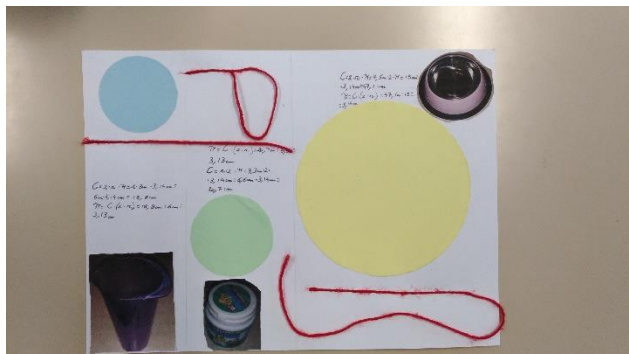
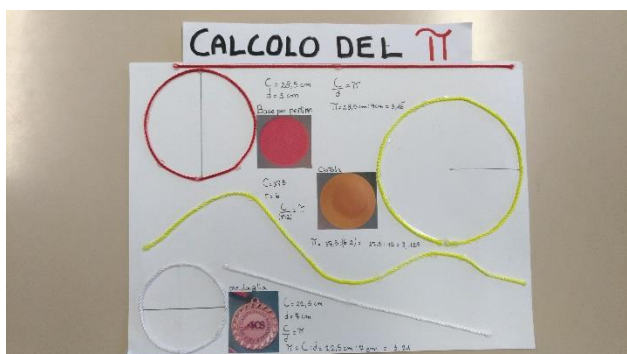


Calcolo del Pi greco π

Prof.ssa Clara Di Palo – classe 3G – a.s. 2017/18



CALCOLIAMO IL π

PIRELLA

$C = \pi \cdot d$
 $C = 20,4 \text{ cm}$
 $d = 6,4 \text{ cm}$
 $r = 3,2 \text{ cm}$
 $\pi = \frac{C}{d} = \frac{20,4}{6,4} = 3,1875$
 $\pi \approx \frac{314}{100} = 3,14$

PIRELLA

$C = \pi \cdot d$
 $C = 27,4 \text{ cm}$
 $d = 8,7 \text{ cm}$
 $r = 4,3 \text{ cm}$
 $\pi = \frac{C}{d} = \frac{27,4}{8,7} = 3,1494$
 $\pi \approx \frac{314}{100} = 3,14$

PIRELLA

$C = \pi \cdot d$
 $C = 35 \text{ cm}$
 $d = 11,1 \text{ cm}$
 $r = 5,5 \text{ cm}$
 $\pi = \frac{C}{d} = \frac{35}{11,1} = 3,1531$
 $\pi \approx \frac{314}{100} = 3,14$

MATHIE SEURA 2016

Calcoliamo IL π

PIRELLA

$C = 40,5 \text{ cm}$
 $r = 2,5 \text{ cm}$
 $d = 5 \text{ cm}$
 $\pi = \frac{C}{d} = \frac{40,5}{5} = 8,1$

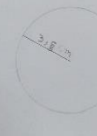
PIRELLA

$C = 9,308 \text{ cm}$
 $r = 1,438 \text{ cm}$
 $d = 2,876 \text{ cm}$
 $\pi = \frac{C}{d} = \frac{9,308}{2,876} = 3,236$

PIRELLA

$C = 6,158 \text{ cm}$
 $r = 1,118 \text{ cm}$
 $d = 2,236 \text{ cm}$
 $\pi = \frac{C}{d} = \frac{6,158}{2,236} = 2,754$

A B MATHIEUB



$C = 20,3$
 $R = 3,15$
 $C = 2 \cdot R \cdot \pi$
 $\pi = \frac{C}{2R} = \frac{20,3}{2 \cdot 3,15} = \frac{20,3}{6,3} = 3,2238$

LEA Calcoliamo IL π

PIRELLA

$C = 20,3$
 $r = 3,15$
 $d = 6,3$
 $\pi = \frac{C}{d} = \frac{20,3}{6,3} = 3,2238$

PIRELLA

$C = 27,4$
 $r = 4,3$
 $d = 8,6$
 $\pi = \frac{C}{d} = \frac{27,4}{8,6} = 3,1860$

CALCOLIAMO IL π

PIRELLA

$C = 40,2 \text{ cm}$
 $r = 2,5 \text{ cm}$
 $d = 5 \text{ cm}$
 $\pi = \frac{C}{d} = \frac{40,2}{5} = 8,04$

PIRELLA

$C = 20,3 \text{ cm}$
 $r = 3,15 \text{ cm}$
 $d = 6,3 \text{ cm}$
 $\pi = \frac{C}{d} = \frac{20,3}{6,3} = 3,2238$

CALCOLIAMO IL π

PIRELLA

$C = 40,2 \text{ cm}$
 $r = 2,5 \text{ cm}$
 $d = 5 \text{ cm}$
 $\pi = \frac{C}{d} = \frac{40,2}{5} = 8,04$

PIRELLA

$C = 20,3 \text{ cm}$
 $r = 3,15 \text{ cm}$
 $d = 6,3 \text{ cm}$
 $\pi = \frac{C}{d} = \frac{20,3}{6,3} = 3,2238$